



**PROPOSTA DE  
ORGANOGRAMA  
IBSCMFOR 2023**

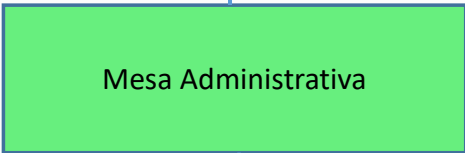
# IRMANDADE BENEFICENTE DA SANTA CASA DA MISERICÓRDIA DE FORTALEZA

## LEGENDA

TONS DE VERDE	ESTRATÉGICO
TONS DE BEGE	ASSESSORIA/STAFF
TONS DE ROSA	TÁTICO
TONS DE CINZA	OPERACIONAL
<b>LINHAS</b>	
ININTERRUPTA	AMPLITUDE ADMINISTRATIVA
PONTILHADA	AUTORIDADE FUNCIONAL
TRACEJADA	ASSESSORIA/STAFF



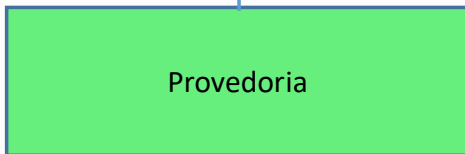
Assembleia Geral



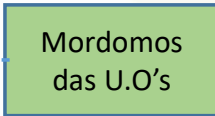
Mesa Administrativa



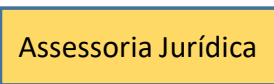
Conselho Fiscal



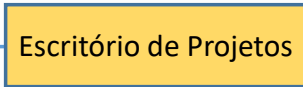
Provedoria



Mordomos das U.O's



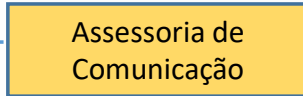
Assessoria Jurídica



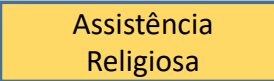
Escritório de Projetos



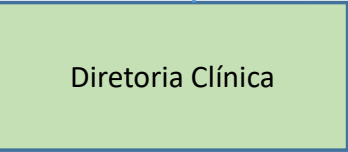
AMISC



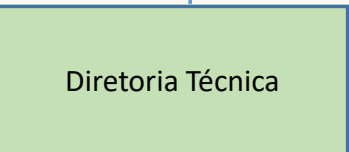
Assessoria de Comunicação



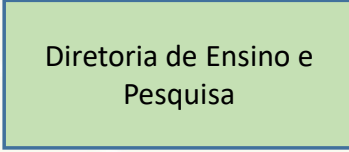
Assistência Religiosa



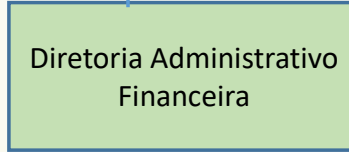
Diretoria Clínica



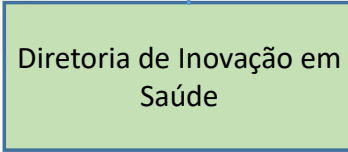
Diretoria Técnica



Diretoria de Ensino e Pesquisa



Diretoria Administrativo Financeira



Diretoria de Inovação em Saúde

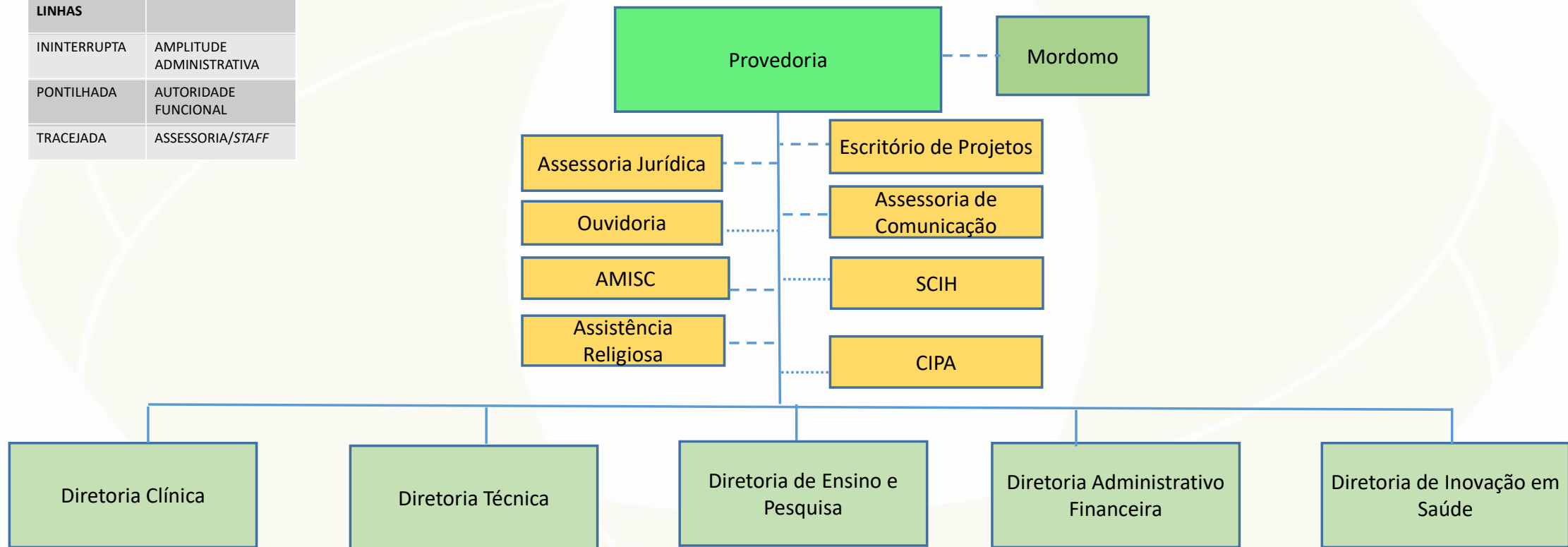
# ORGANOGRAMA DO HOSPITAL DA SANTA CASA



LEGENDA	
TONS DE VERDE	ESTRATÉGICO
TONS DE BEGE	ASSESSORIA/STAFF
TONS DE ROSA	TÁTICO
TONS DE CINZA	OPERACIONAL
LINHAS	
ININTERRUPTA	AMPLITUDE ADMINISTRATIVA
PONTILHADA	AUTORIDADE FUNCIONAL
TRACEJADA	ASSESSORIA/STAFF

## HOSPITAL DA SANTA CASA DA MISERICÓRDIA DE FORTALEZA

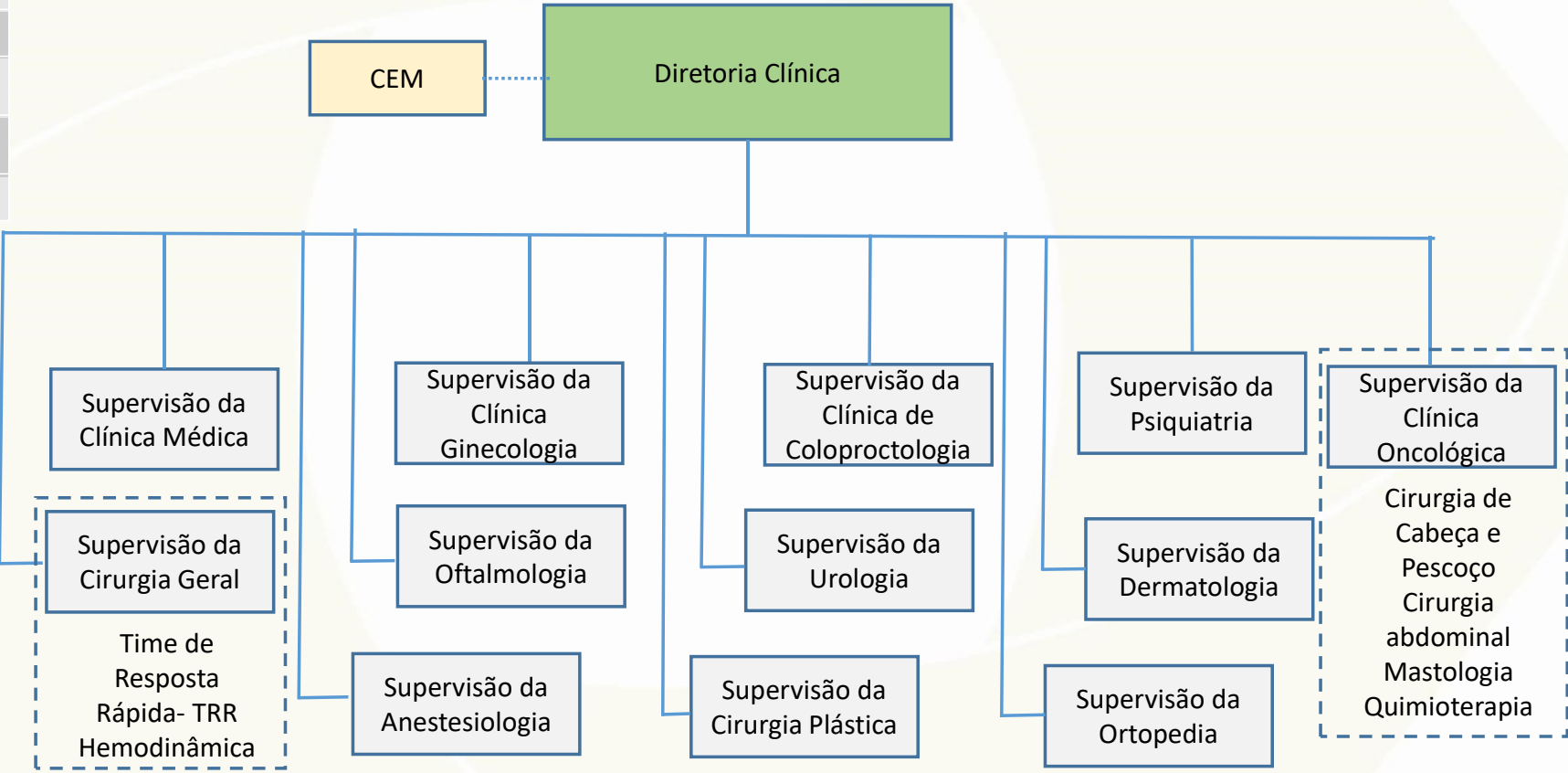
### NÍVEL ESTRATÉGICO



LEGENDA	
TONS DE VERDE	ESTRATÉGICO
TONS DE BEGE	ASSESSORIA/STAFF
TONS DE ROSA	TÁTICO
TONS DE CINZA	OPERACIONAL
LINHAS	
ININTERRUPTA	AMPLITUDE ADMINISTRATIVA
PONTILHADA	AUTORIDADE FUNCIONAL
TRACEJADA	ASSESSORIA/STAFF

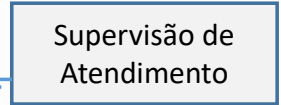
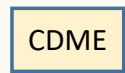
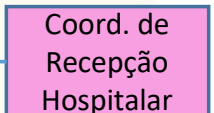
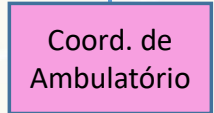
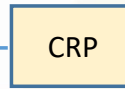
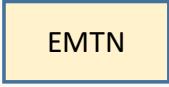
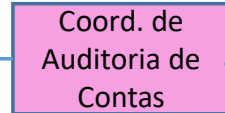
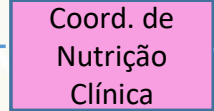
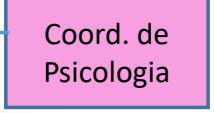
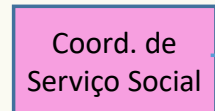
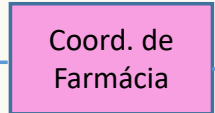
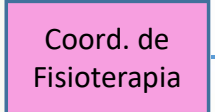
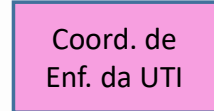
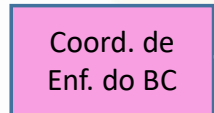
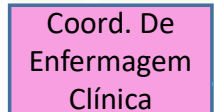
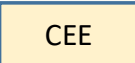
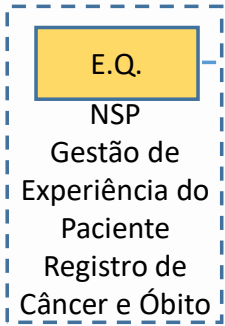
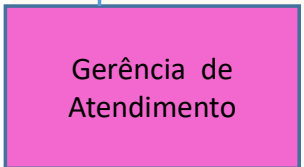
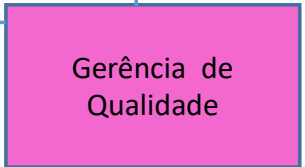
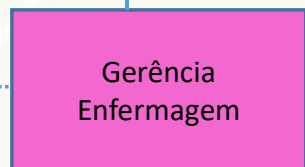
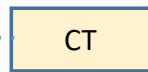
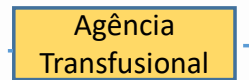
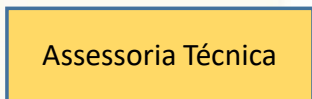
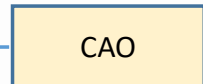
# HOSPITAL DA SANTA CASA DA MISERICÓRIDA DE FORTALEZA

## DIRETORIA CLÍNICA



# HOSPITAL DA SANTA CASA DA MISERICÓRIDA DE FORTALEZA

## DIRETORIA TÉCNICA

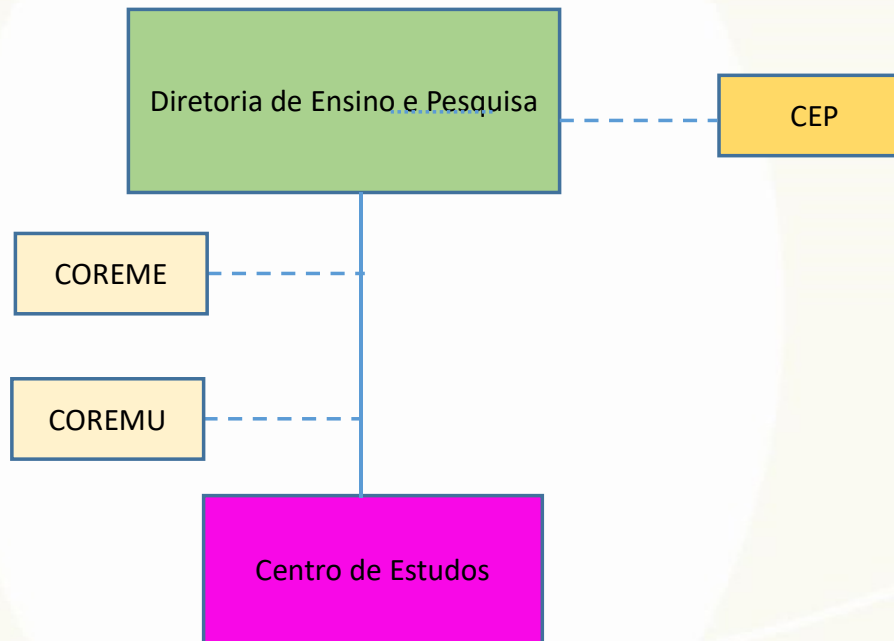


TONS DE BEGE	ASSESSORIA/STAFF
TONS DE ROSA	TÁTICO
TONS DE CINZA	OPERACIONAL
<b>LINHAS</b>	
ININTERRUPTA	AMPLITUDE ADMINISTRATIVA
PONTILHADA	AUTORIDADE FUNCIONAL
TRACEJADA	ASSESSORIA/STAFF

LEGENDA	
TONS DE VERDE	ESTRATÉGICO
TONS DE BEGE	ASSESSORIA/STAFF
TONS DE ROSA	TÁTICO
TONS DE CINZA	OPERACIONAL
LINHAS	
ININTERRUPTA	AMPLITUDE ADMINISTRATIVA
PONTILHADA	AUTORIDADE FUNCIONAL
TRACEJADA	ASSESSORIA/STAFF

## HOSPITAL DA SANTA CASA DA MISERICÓRIDA DE FORTALEZA

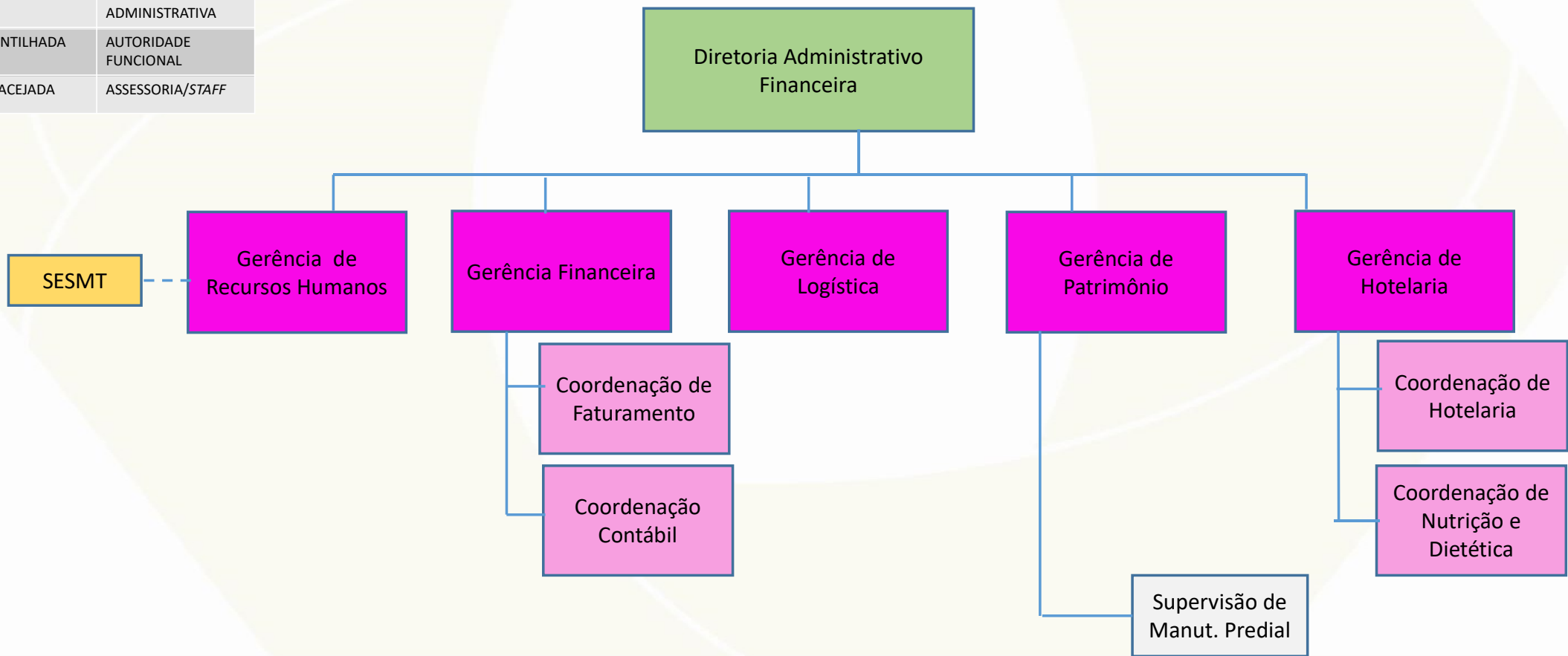
### DIRETORIA DE ENSINO E PESQUISA



LEGENDA	
TONS DE VERDE	ESTRATÉGICO
TONS DE BEGE	ASSESSORIA/STAFF
TONS DE ROSA	TÁTICO
TONS DE CINZA	OPERACIONAL
LINHAS	
ININTERRUPTA	AMPLITUDE ADMINISTRATIVA
PONTILHADA	AUTORIDADE FUNCIONAL
TRACEJADA	ASSESSORIA/STAFF

# HOSPITAL DA SANTA CASA DA MISERICÓRIDA DE FORTALEZA

## DIRETORIA ADMINISTRATIVO-FINANCEIRA

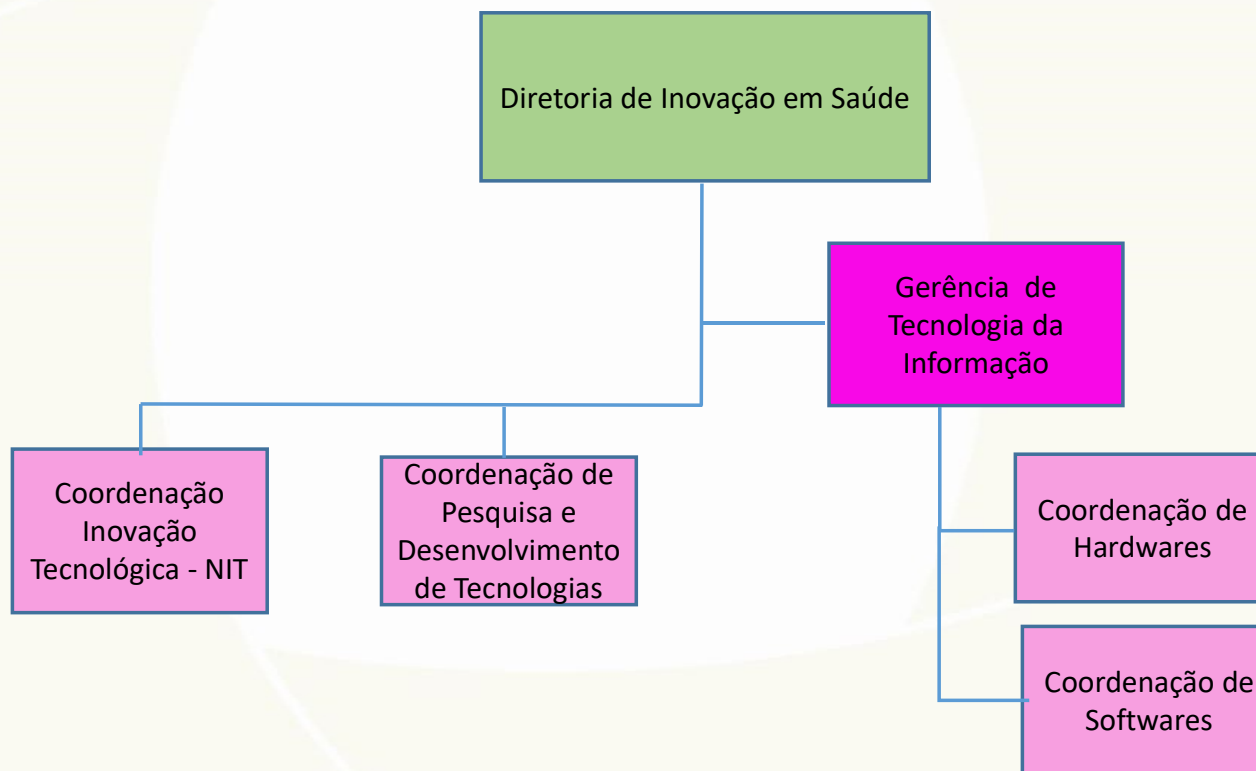




# HOSPITAL DA SANTA CASA DA MISERICÓRIDA DE FORTALEZA

## DIRETORIA DE INOVAÇÃO EM SAÚDE

LEGENDA	
TONS DE VERDE	ESTRATÉGICO
TONS DE BEGE	ASSESSORIA/STAFF
TONS DE ROSA	TÁTICO
TONS DE CINZA	OPERACIONAL
LINHAS	
ININTERRUPTA	AMPLITUDE ADMINISTRATIVA
PONTILHADA	AUTORIDADE FUNCIONAL
TRACEJADA	ASSESSORIA/STAFF

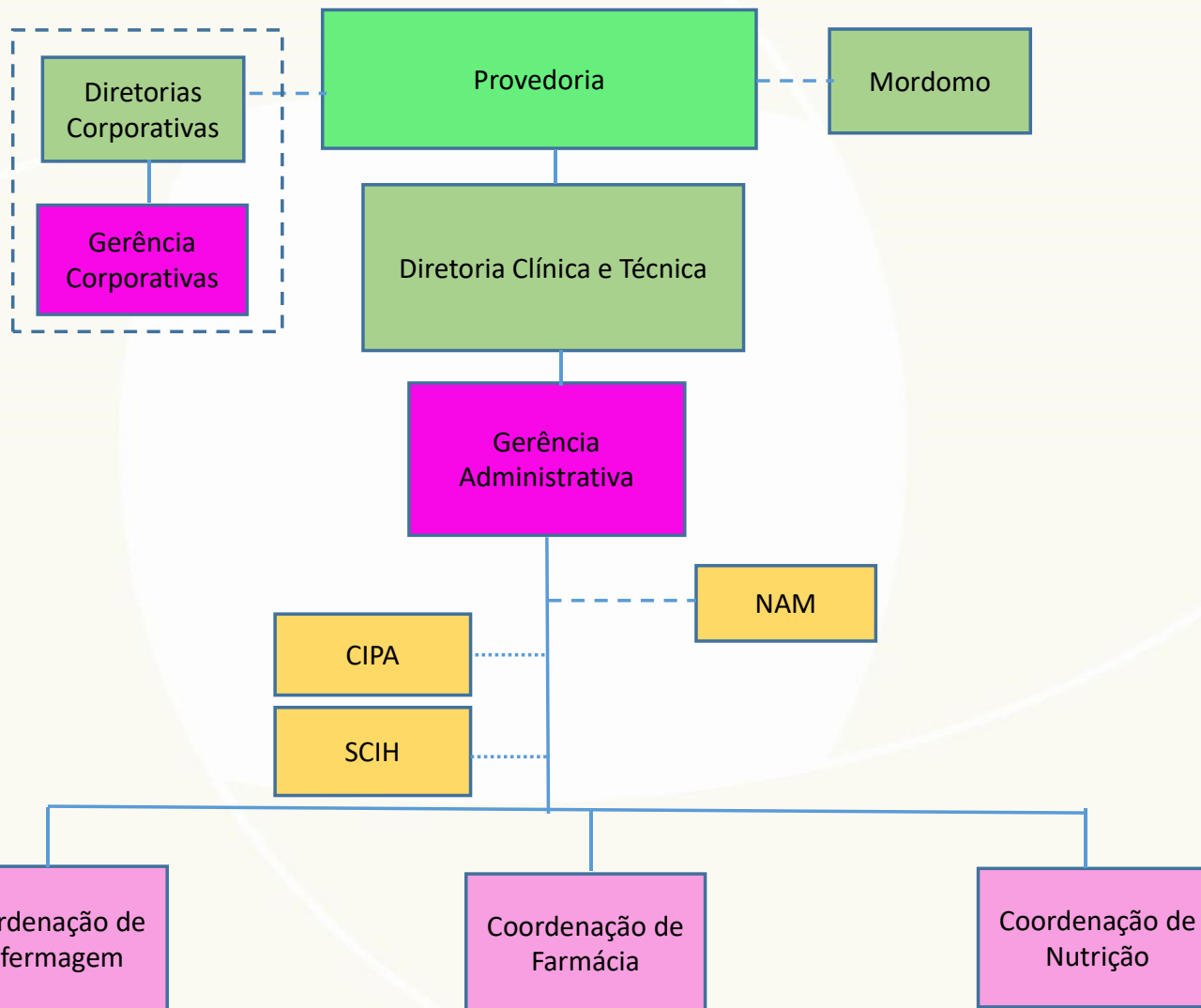


# ORGANOGRAMA DO HOSPITAL PSIQUIÁTRICO SÃO VICENTE DE PAULO



# HOSPITAL PSIQUIÁTRICO SÃO VICENTE DE PAULO

## ESTRUTURA GERAL



### LEGENDA

TONS DE VERDE	ESTRATÉGICO
TONS DE BEGE	ASSESSORIA/STAFF
TONS DE ROSA	TÁTICO
TONS DE CINZA	OPERACIONAL
LINHAS	
ININTERRUPTA	AMPLITUDE ADMINISTRATIVA
PONTILHADA	AUTORIDADE FUNCIONAL
TRACEJADA	ASSESSORIA/STAFF

# ORGANOGRAMA DO CEMITÉRIO SÃO JOÃO BATISTA



**LEGENDA**

TONS DE VERDE	ESTRATÉGICO
TONS DE BEGE	ASSESSORIA/STAFF
TONS DE ROSA	TÁTICO
TONS DE CINZA	OPERACIONAL
<b>LINHAS</b>	
ININTERRUPTA	AMPLITUDE ADMINISTRATIVA
PONTILHADA	AUTORIDADE FUNCIONAL
TRACEJADA	ASSESSORIA/STAFF

# CEMITÉRIO SÃO JOÃO BATISTA

## ESTRUTURA GERAL

